



**U.S. ARMY CORPS OF ENGINEERS  
REGULATORY PROGRAM  
APPROVED JURISDICTIONAL DETERMINATION FORM (INTERIM)  
NAVIGABLE WATERS PROTECTION RULE**

**I. ADMINISTRATIVE INFORMATION**

Completion Date of Approved Jurisdictional Determination (AJD): 02/16/2021  
 ORM Number: SWF-2020-00526  
 Associated JDs: N/A  
 Review Area Location<sup>1</sup>: State/Territory: Texas City: Fort Worth County/Parish/Borough: Denton  
 Center Coordinates of Review Area: Latitude 32.971 Longitude -97.291

**II. FINDINGS**

**A. Summary:** Check all that apply. At least one box from the following list MUST be selected. Complete the corresponding sections/tables and summarize data sources.

- The review area is comprised entirely of dry land (i.e., there are no waters or water features, including wetlands, of any kind in the entire review area). Rationale: N/A or describe rationale.
- There are “navigable waters of the United States” within Rivers and Harbors Act jurisdiction within the review area (complete table in Section II.B).
- There are “waters of the United States” within Clean Water Act jurisdiction within the review area (complete appropriate tables in Section II.C).
- There are waters or water features excluded from Clean Water Act jurisdiction within the review area (complete table in Section II.D).

**B. Rivers and Harbors Act of 1899 Section 10 (§ 10)<sup>2</sup>**

§ 10 Name	§ 10 Size	§ 10 Criteria	Rationale for § 10 Determination
N/A.	N/A.	N/A.	N/A.

**C. Clean Water Act Section 404**

Territorial Seas and Traditional Navigable Waters ((a)(1) waters): <sup>3</sup>			
(a)(1) Name	(a)(1) Size	(a)(1) Criteria	Rationale for (a)(1) Determination
N/A.	N/A.	N/A.	N/A.

Tributaries ((a)(2) waters):			
(a)(2) Name	(a)(2) Size	(a)(2) Criteria	Rationale for (a)(2) Determination
N/A.	N/A.	N/A.	N/A.

Lakes and ponds, and impoundments of jurisdictional waters ((a)(3) waters):			
(a)(3) Name	(a)(3) Size	(a)(3) Criteria	Rationale for (a)(3) Determination
N/A.	N/A.	N/A.	N/A.

Adjacent wetlands ((a)(4) waters):			
(a)(4) Name	(a)(4) Size	(a)(4) Criteria	Rationale for (a)(4) Determination
N/A.	N/A.	N/A.	N/A.

<sup>1</sup> Map(s)/figure(s) are attached to the AJD provided to the requestor.  
<sup>2</sup> If the navigable water is not subject to the ebb and flow of the tide or included on the District’s list of Rivers and Harbors Act Section 10 navigable waters list, do NOT use this document to make the determination. The District must continue to follow the procedure outlined in 33 CFR part 329.14 to make a Rivers and Harbors Act Section 10 navigability determination.  
<sup>3</sup> A stand-alone TNW determination is completed independently of a request for an AJD. A stand-alone TNW determination is conducted for a specific segment of river or stream or other type of waterbody, such as a lake, where upstream or downstream limits or lake borders are established. A stand-alone TNW determination should be completed following applicable guidance and should NOT be documented on the AJD Form.



**U.S. ARMY CORPS OF ENGINEERS  
REGULATORY PROGRAM  
APPROVED JURISDICTIONAL DETERMINATION FORM (INTERIM)  
NAVIGABLE WATERS PROTECTION RULE**

**D. Excluded Waters or Features**

Excluded waters ((b)(1) – (b)(12)): <sup>4</sup>			
Exclusion Name	Exclusion Size	Exclusion <sup>5</sup>	Rationale for Exclusion Determination
Pond 1	0.33 acre(s)	(b)(8) Artificial lake/pond constructed or excavated in upland or a non-jurisdictional water, so long as the artificial lake or pond is not an impoundment of a jurisdictional water that meets (c)(6).	Pond would be excluded waters under Section 328.3(b)(1) and (b)(8).
Stream 1	845 linear feet	(b)(3) Ephemeral feature, including an ephemeral stream, swale, gully, rill, or pool.	Does not contribute surface water flow to traditional navigable water or territorial sea in a typical year.

**III. SUPPORTING INFORMATION**

**A. Select/enter all resources** that were used to aid in this determination and attach data/maps to this document and/or references/citations in the administrative record, as appropriate.

Information submitted by, or on behalf of, the applicant/consultant: [Saratoga – No Permit Required Verification Request, December 3, 2020.](#)

This information is sufficient for purposes of this AJD.

Rationale: [N/A](#)

Data sheets prepared by the Corps: [Title\(s\) and/or date\(s\).](#)

Photographs: [Aerial and Other: NAIP 2018 and On-site Photographs provided in above referenced report dated September 28, 2020.](#)

Corps site visit(s) conducted on: [Date\(s\).](#)

Previous Jurisdictional Determinations (AJDs or PJDs): [ORM Number\(s\) and date\(s\).](#)

Antecedent Precipitation Tool: [provide detailed discussion in Section III.B.](#)

USDA NRCS Soil Survey: [Title\(s\) and/or date\(s\).](#)

USFWS NWI maps: [Title\(s\) and/or date\(s\).](#)

USGS topographic maps: [Keller Quadrangle, 1982](#)

**Other data sources used to aid in this determination:**

Data Source (select)	Name and/or date and other relevant information
<a href="#">USGS Sources</a>	<a href="#">N/A.</a>

<sup>4</sup> Some excluded waters, such as (b)(2) and (b)(4), may not be specifically identified on the AJD form unless a requestor specifically asks a Corps district to do so. Corps districts may, in case-by-case instances, choose to identify some or all of these waters within the review area.

<sup>5</sup> Because of the broad nature of the (b)(1) exclusion and in an effort to collect data on specific types of waters that would be covered by the (b)(1) exclusion, four sub-categories of (b)(1) exclusions were administratively created for the purposes of the AJD Form. These four sub-categories are not new exclusions, but are simply administrative distinctions and remain (b)(1) exclusions as defined by the NWPR.

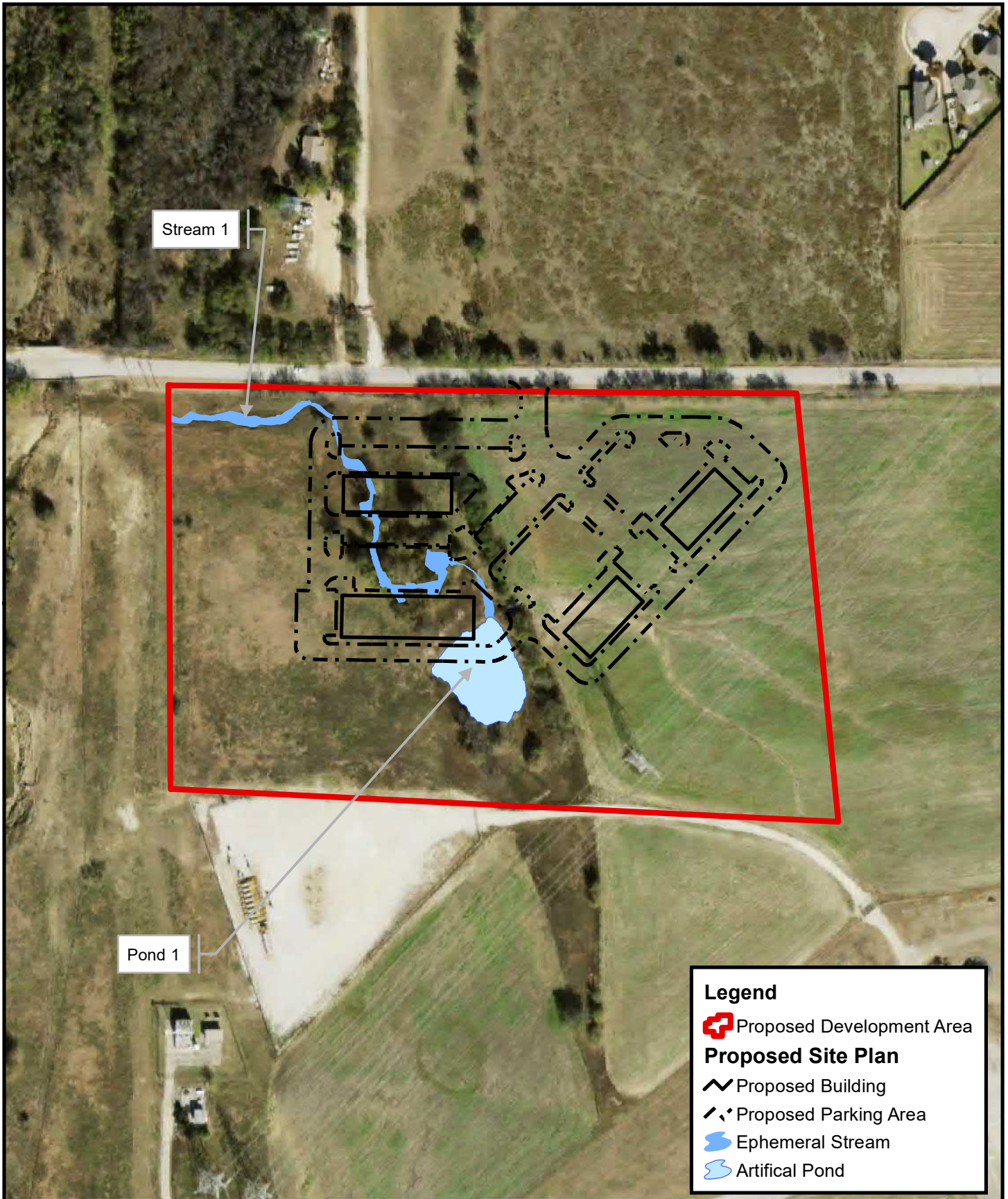


**U.S. ARMY CORPS OF ENGINEERS  
REGULATORY PROGRAM  
APPROVED JURISDICTIONAL DETERMINATION FORM (INTERIM)  
NAVIGABLE WATERS PROTECTION RULE**

Data Source (select)	Name and/or date and other relevant information
USDA Sources	N/A.
NOAA Sources	N/A.
USACE Sources	Palmer Drought Index, September 2020 and Climate Data Online, Station – Fort Worth Alliance Airport, TX US USW00053909 for September 2020
State/Local/Tribal Sources	N/A.
Other Sources	WebWIMP, Latitude – 32.971; Longitude -97.291

**B. Typical year assessment(s):** N/A or provide typical year assessment for each relevant data source used to support the conclusions in the AJD.



**C. Additional comments to support AJD:** N/A or provide additional discussion as appropriate.



Stream 1

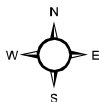
Pond 1

**Legend**

-  Proposed Development Area
- Proposed Site Plan**
-  Proposed Building
-  Proposed Parking Area
-  Ephemeral Stream
-  Artificial Pond

SHEET NO. 6 OF 6

GRAPHIC SCALE



Saratoga

*Proposed Site Plan Exhibit*

City of Fort Worth, Denton County, Texas

Prepared By:



9800 HILLWOOD PARKWAY, SUITE 250  
FORT WORTH, TX 76177  
PHONE: 817-562-3350